



Foto: Itak Relanzón.

Where does the Montseny newt live?

The Montseny newt is very difficult to find and observe in the wild. It lives in remote and inaccessible parts of mountain streams, requiring excellent environmental conditions: cold, oxygenated and very clean waters with rocky bottoms. These streams can always be found in well preserved beech, holm oak and riverbank forests.



Foto: Maria Barrachina.



Information:

Montseny Natural Park Office. Masia Mariona
Ctra. BV-5119, km 2,5 (Mosqueroles)
08479 Fogars de Montclús
Tel. 938 475 102 / 669 119 062
lifetrito@diba.cat
@LifeTrito



www.lifetritomontseny.eu

The contents of this brochure do not reflect the opinion of the European Union. The authors assume full responsibility for the information contained herein.



The Montseny Newt

(*Calotriton arnoldi*)

Project co-financed by the LIFE Programme of the European Union

ENGLISH



The Project

The project was launched to protect the critically endangered Montseny newt. Around 50 initiatives will be carried out between 2016 and 2020 to ensure the conservation of the species and its habitat in the high-lying streams and surrounding forests of the Natura 2000 Network Montseny-ES5110001.

The Montseny Newt

It is a unique amphibian species found only in the most hidden and best preserved corners of the Montseny Natural Park and Biosphere Reserve. This makes it endemic to Montseny. The first populations of the species were identified as the Pyrenean newt (*Calotriton asper*) in 1979. However, subsequent scientific studies were conducted in late 2005, leading to the discovery that these Montseny populations actually belonged to a completely different and new species.

Foto: Félix Amat.

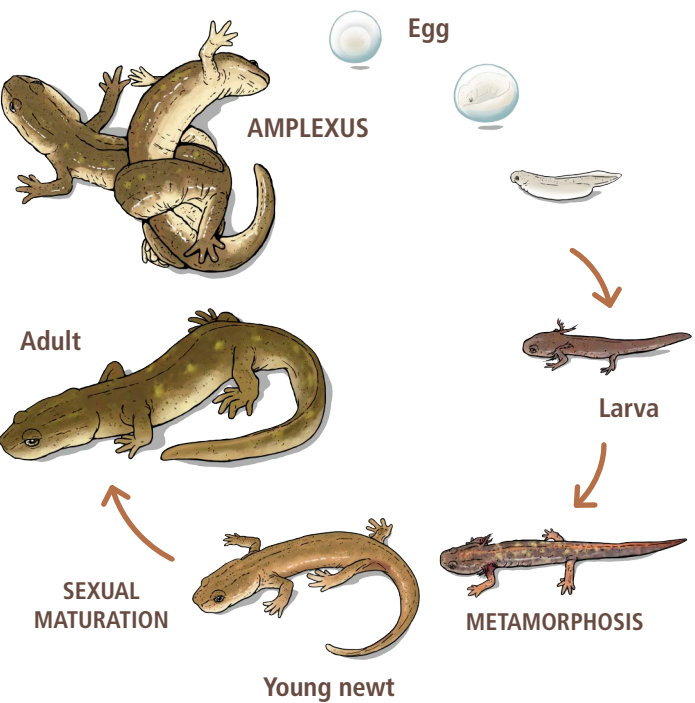


What is the Montseny newt like?

- It is a Urodela, i.e. an amphibian with a tail belonging to the salamander family (*Salamandridae*).
- It is chocolate in colour, sometimes with pale yellow spots.
- Its belly is translucent, and it has an ivory-coloured stain on its neck.
- It has warty skin with a black hardened tip.

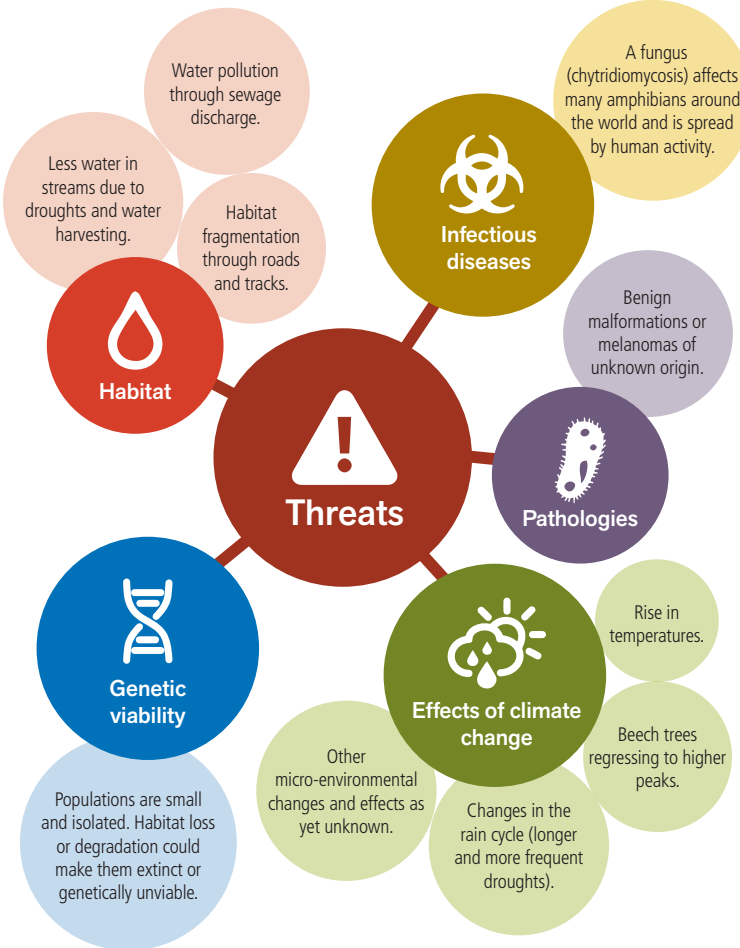
Life Cycle

The Montseny newt is an exclusively aquatic amphibian: All phases of its life cycle are spent in the water.



Why is the Montseny newt endangered?

The International Union for the Conservation of Nature (IUCN) has classified this species as critically endangered. It is one of the most endangered amphibians in Europe. Its population is sparse and spread out over a very small area. It is also very well adapted to its habitat and has very little capacity to disperse to other areas, as it can only move through water.



How are we conserving the Montseny newt?



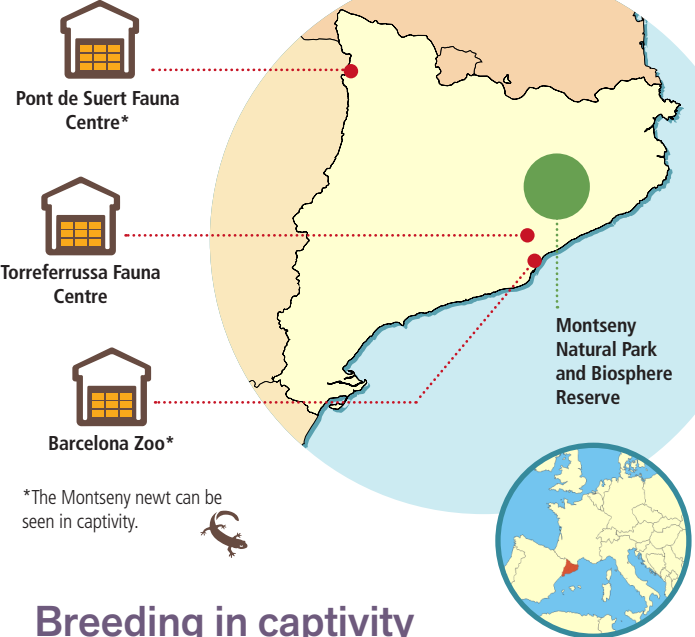
How can I help the Montseny newt?

- 🚰 Reduce your water consumption at home.
- ♻️ Optimally use and recycle water.
- 🚫 Do not dispose of your waste in rivers and streams.
- 🌳 Respect the nature around streams and riverside forests.

Geographical scope

The Life Tritó project will mainly be carried out in the Montseny Natural Park and Biosphere Reserve, located in Catalonia's precoastal mountain range. However, the project will also be carried out at three breeding centres: Pont de Suert, Torreferrussa and Barcelona Zoo.

Montseny newt breeding centres:



Breeding in captivity

The Life Tritó Montseny project is committed to breeding the species in captivity to boost natural populations. Breeding centres will guarantee the genetic reserve of the Montseny newt outside its natural habitat. This will increase the number of specimens that can be released into the wild and expand the geographical distribution of the species. By studying the Montseny newt in captivity, we can also learn more about its biology and ecological needs.